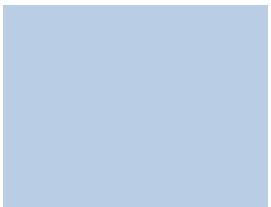




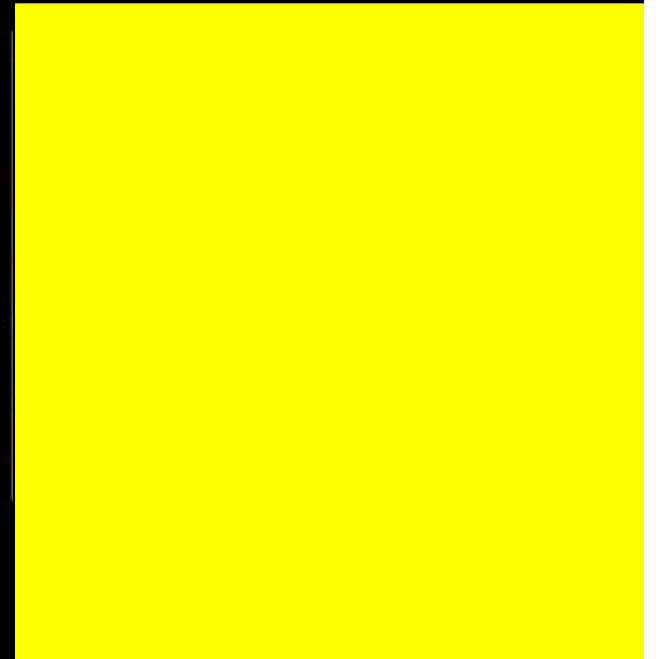
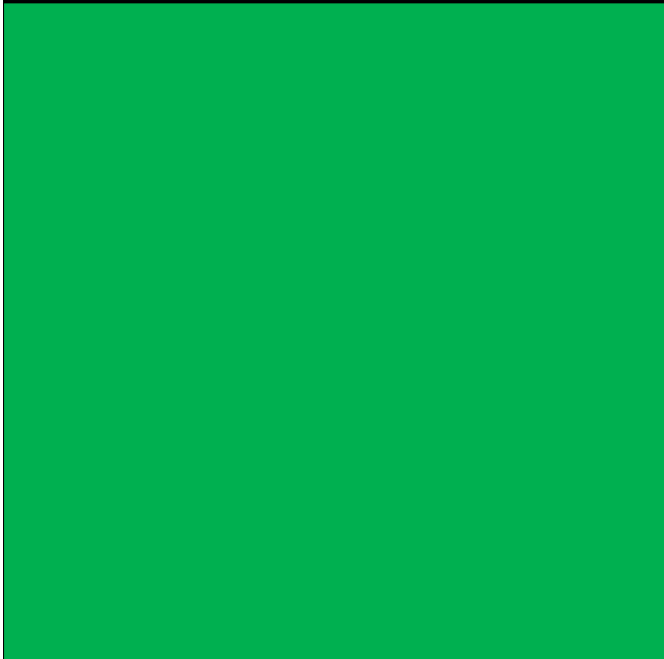
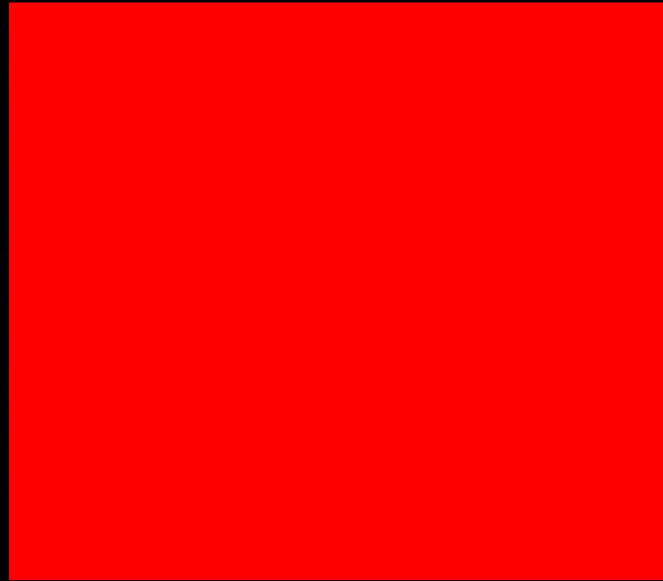
# Transforming Care: Leveraging Healthcare Technology To Improve Health For The Pediatric And Adolescent Population



## Albert Oriol, CIO Rady Children's



# IT Leaders



# Agenda

- Context: Rady Children's Hospital – San Diego
- The Strategic Process: Engagement From The Top
- Transforming Healthcare
  - mHealth
  - Telemedicine
  - Sequencing
- Changing The World



# Rady Children's

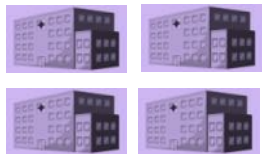
Hospital  
San Diego



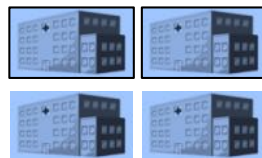
**Acute Care Hospital**



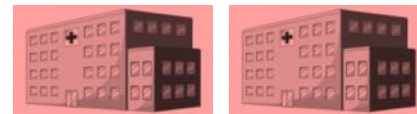
**Branded Centers with Multiple Outpatient Services:**  
Escondido & Oceanside



**Urgent Care Centers:**  
Carlsbad, Escondido, La Mesa, Mid-City San Diego



**Satellite NICUs:**  
Scripps La Jolla, Encinitas, Mercy, Chula Vista, Palomar Medical Center, Rancho Springs



**Satellite Pediatric Units:**  
Sharp Grossmont Hospital, Palomar Medical Center



**Institute for Genomic Medicine**



**Home Health Agency**



**Primary Care Locations:**  
CPCMG

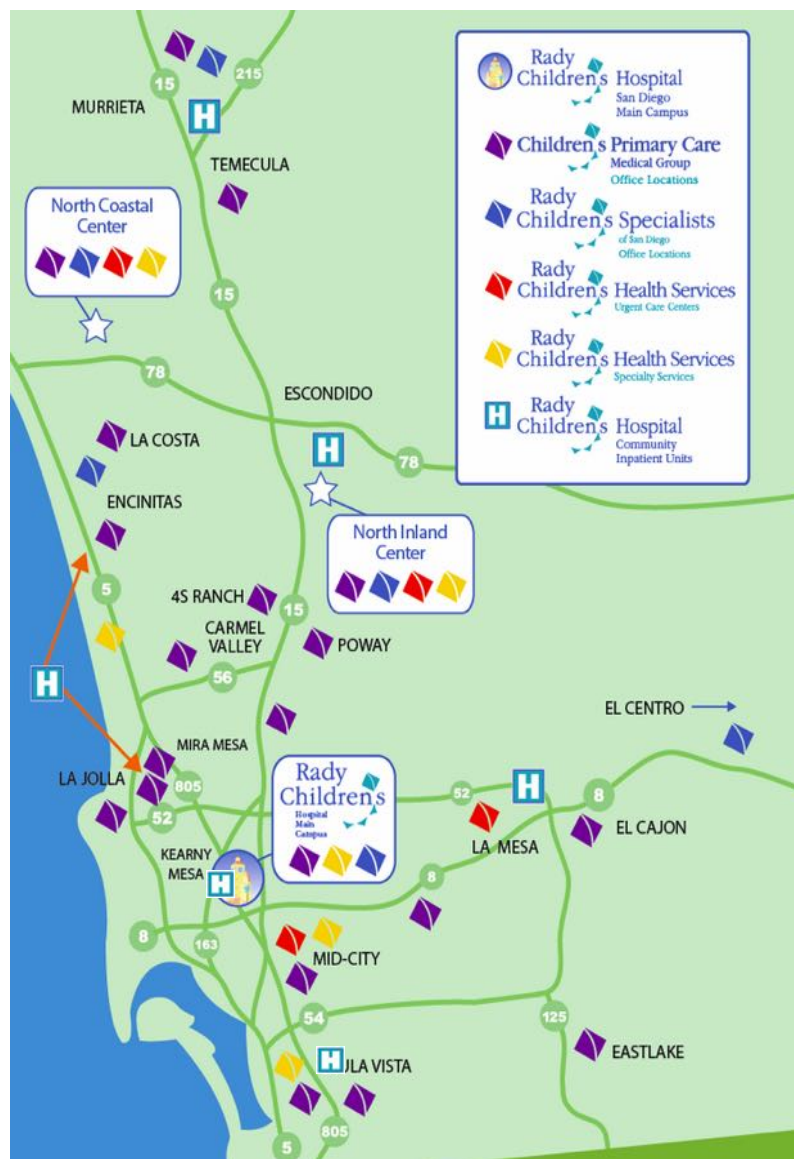


**Community Health Improvement Services**

## Rady Children's Health Network

**Medical Outreach Locations**

# About Rady Children's



## Fast Facts FY2016:

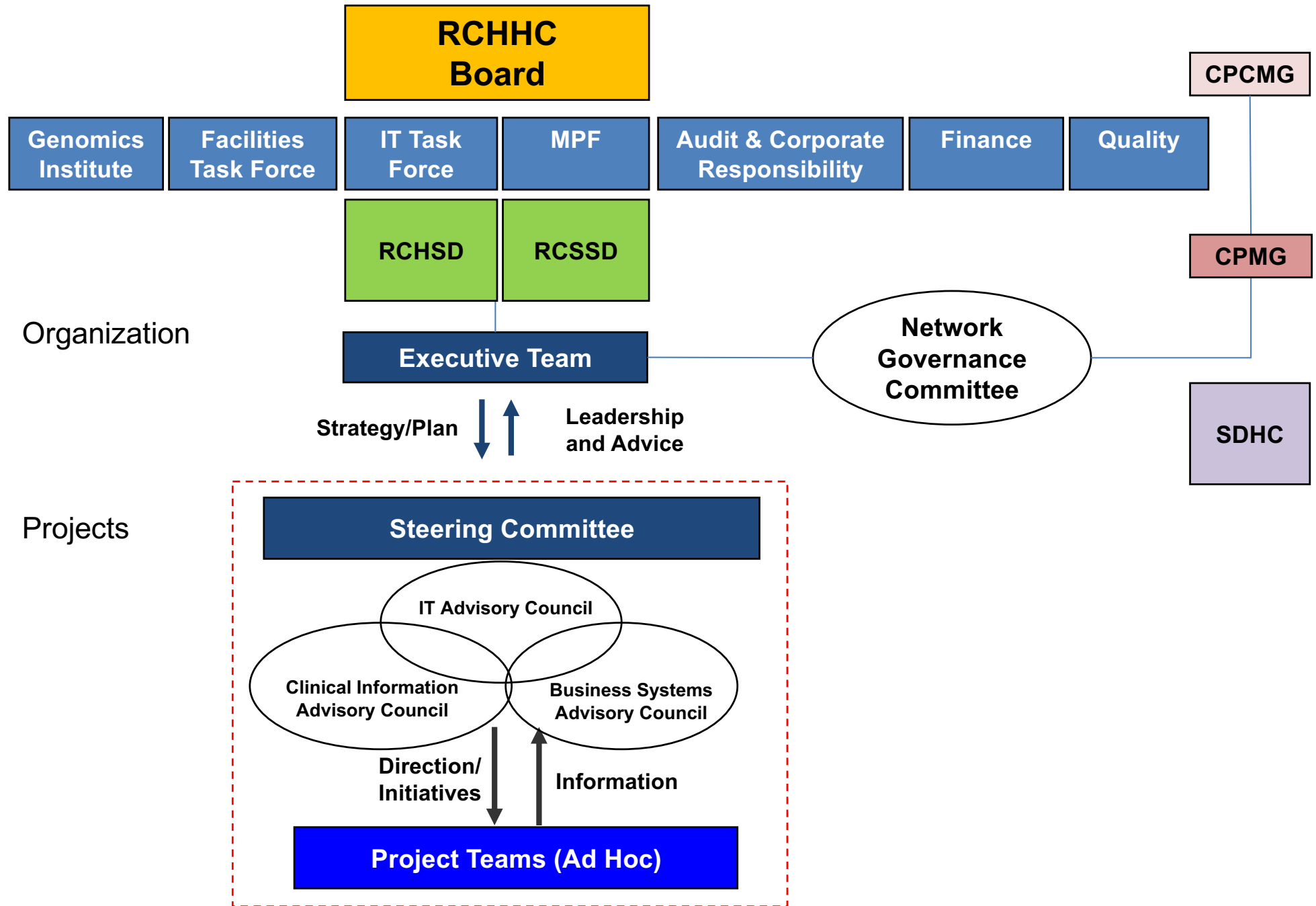
<b>Beds:</b>	550
<b>Revenue:</b>	\$1B
<b>Capitated Lives:</b>	250,000
<b>Employees:</b>	5,200
<b>Physicians:</b>	700 affiliated 400 subspecialists
<b>Nurses:</b>	1,000+
<b>Admissions:</b>	19,000+
<b>Surgeries:</b>	20,000+
<b>ED and UC Visits:</b>	147,000+
<b>Outpatient Specialty Visits:</b>	230,000+
<b>Outpatient PCP Visits:</b>	450,000+

Affiliated with UCSD School of Medicine

Region's provider of choice and safety net

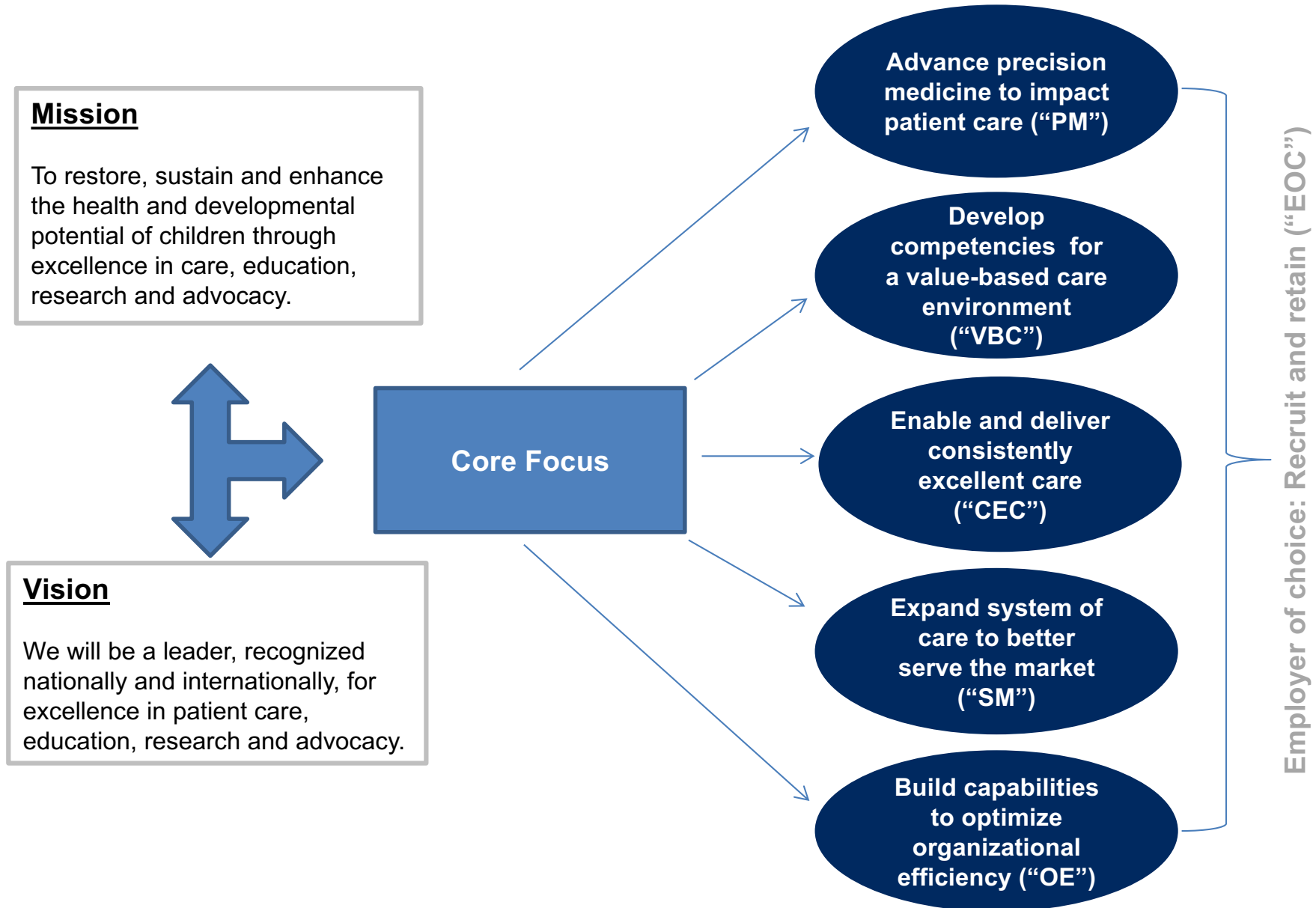
- Context: Rady Children's Hospital – San Diego
- The Strategic Process: Engagement From The Top
- Transforming Healthcare
  - mHealth
  - Telemedicine
  - Sequencing
- Changing The World





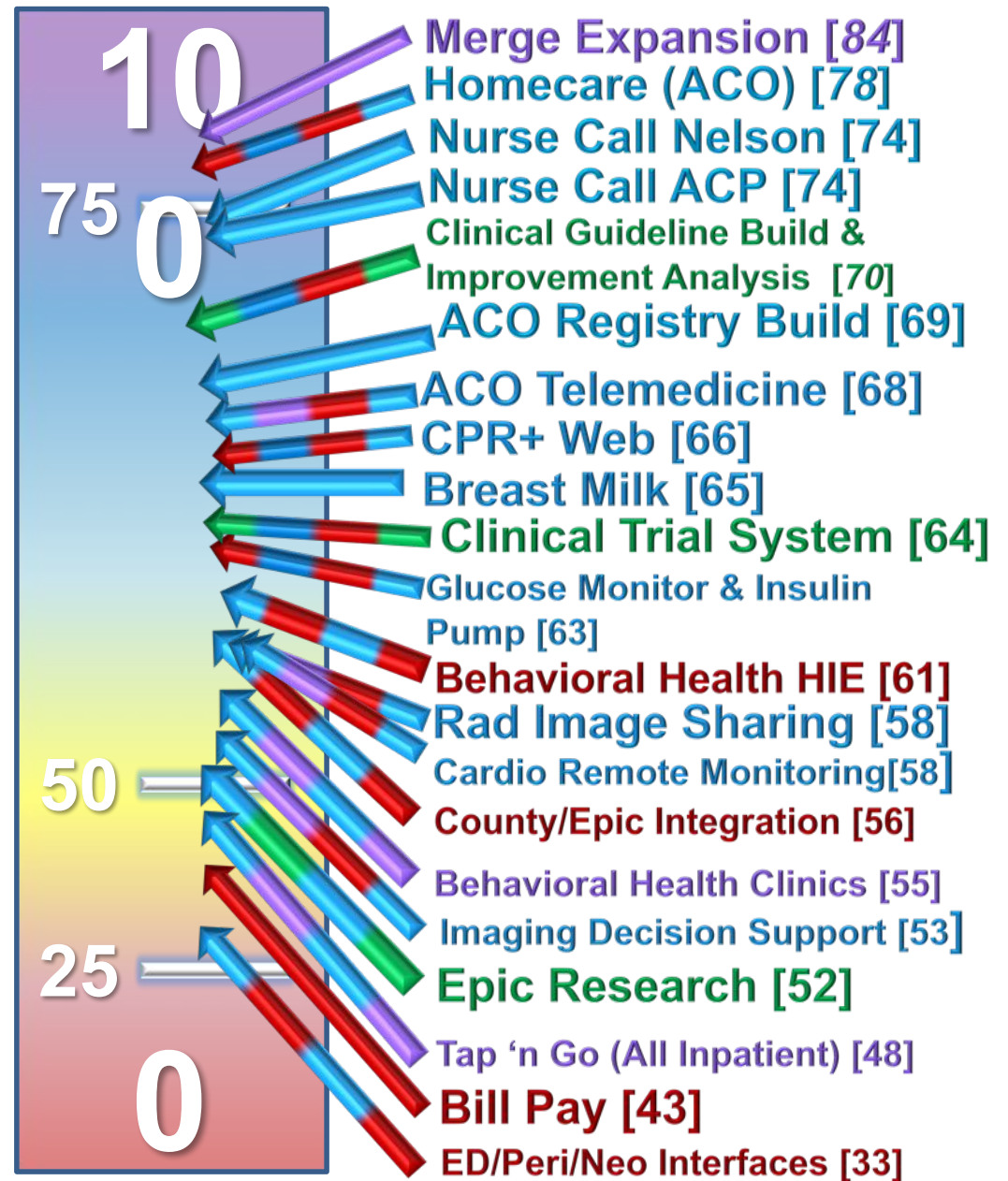


# Six Strategies Drive Information Management Efforts At Rady Children's





# 21 Submissions



# Guiding Principles

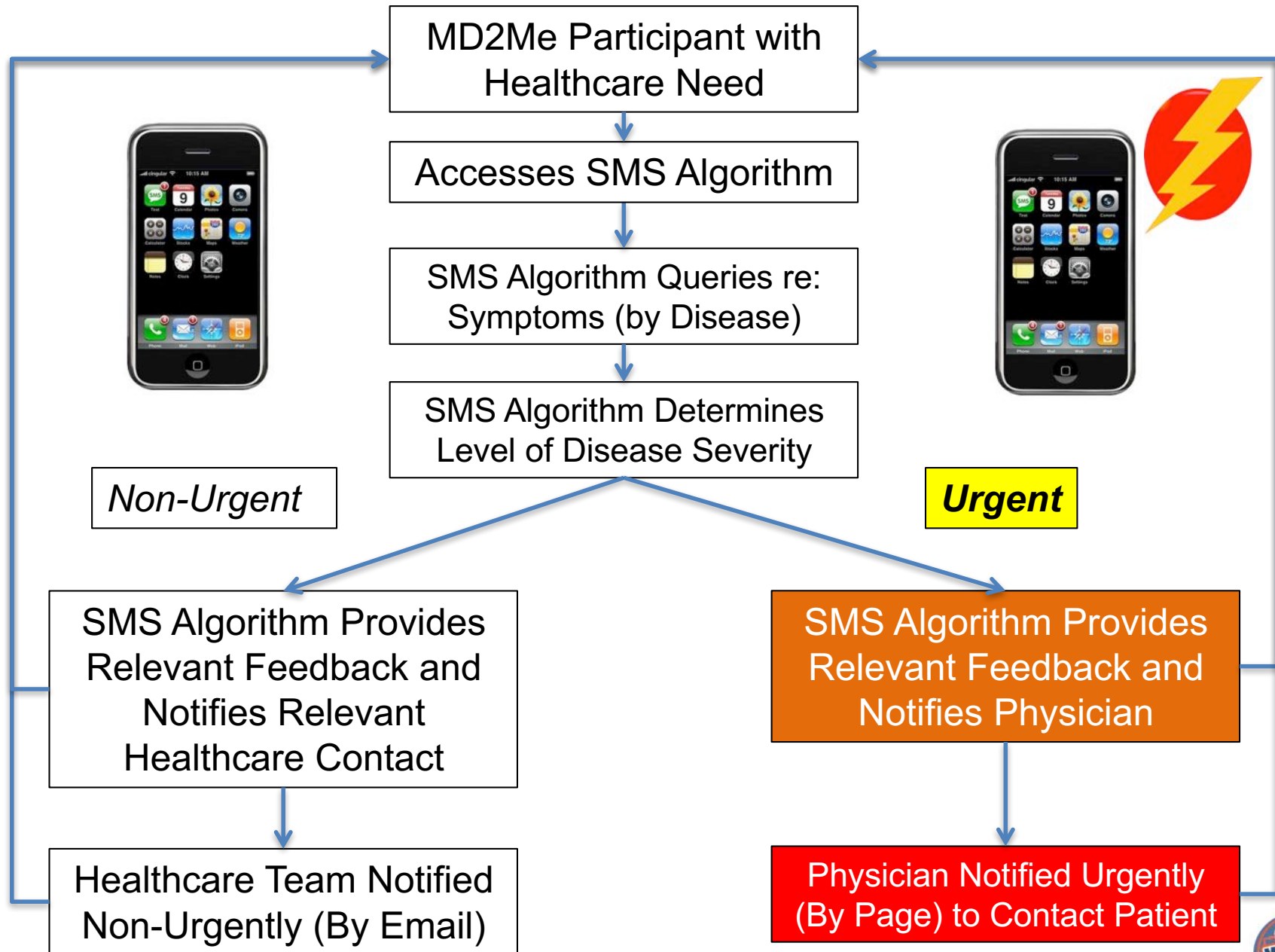
- **Full Participation**
- Full Focus
- **Business/Clinical Ownership & Accountability**
- Relentless Communication
- Empower Decision Makers
- **Excellence, not perfection**
- Leverage Success of Others
- Standardization
  - Value and respect the business needs of each entity
- On Time/On Budget
- **It's for the Kids!**



- Context: Rady Children's Hospital – San Diego
- The Strategic Process: Engagement From The Top
- Transforming Healthcare
  - mHealth
  - Telemedicine
  - Sequencing
- Changing The World







# MD2Me Results



## ✓ Retention Rate

- $75/81 = 93\%$
- $38/40 = 95\%$  *Intervention Group*



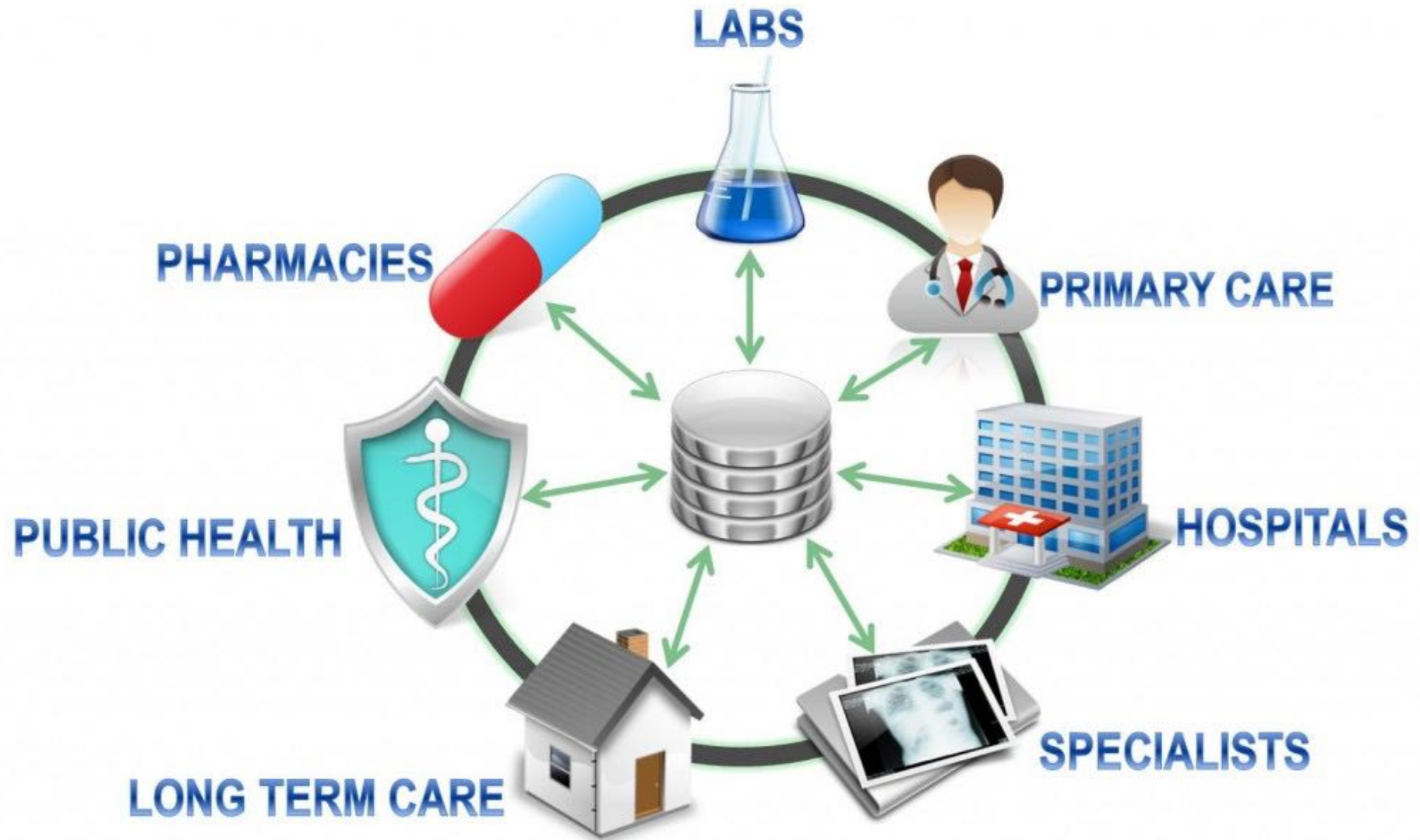
## ✓ 79% Compliance with Curriculum

## ✓ Significant improvements – Intervention v. Control

- ✓ Chronic disease management
- ✓ Health-related self-efficacy
- ✓ Patient-initiated communications with health care team









# The Results



Productivity



Quality of Visit



Less Duplicate Tests



Satisfaction

– Patient 

– Support staff 

– Provider 



- Context: Rady Children's Hospital – San Diego
- The Strategic Process: Engagement From The Top
- Transforming Healthcare
  - mHealth
  - Telemedicine
  - Sequencing
- Changing The World



# Tablets in Speech-Language Therapy

- Therapy augmentation
- Parent Education/Mentoring
- AAC device—communication systems
- Video modeling



“Through telemedicine we are creating a superior, rather than a comparable patient and provider experience”

Anthony Magit, M.D.

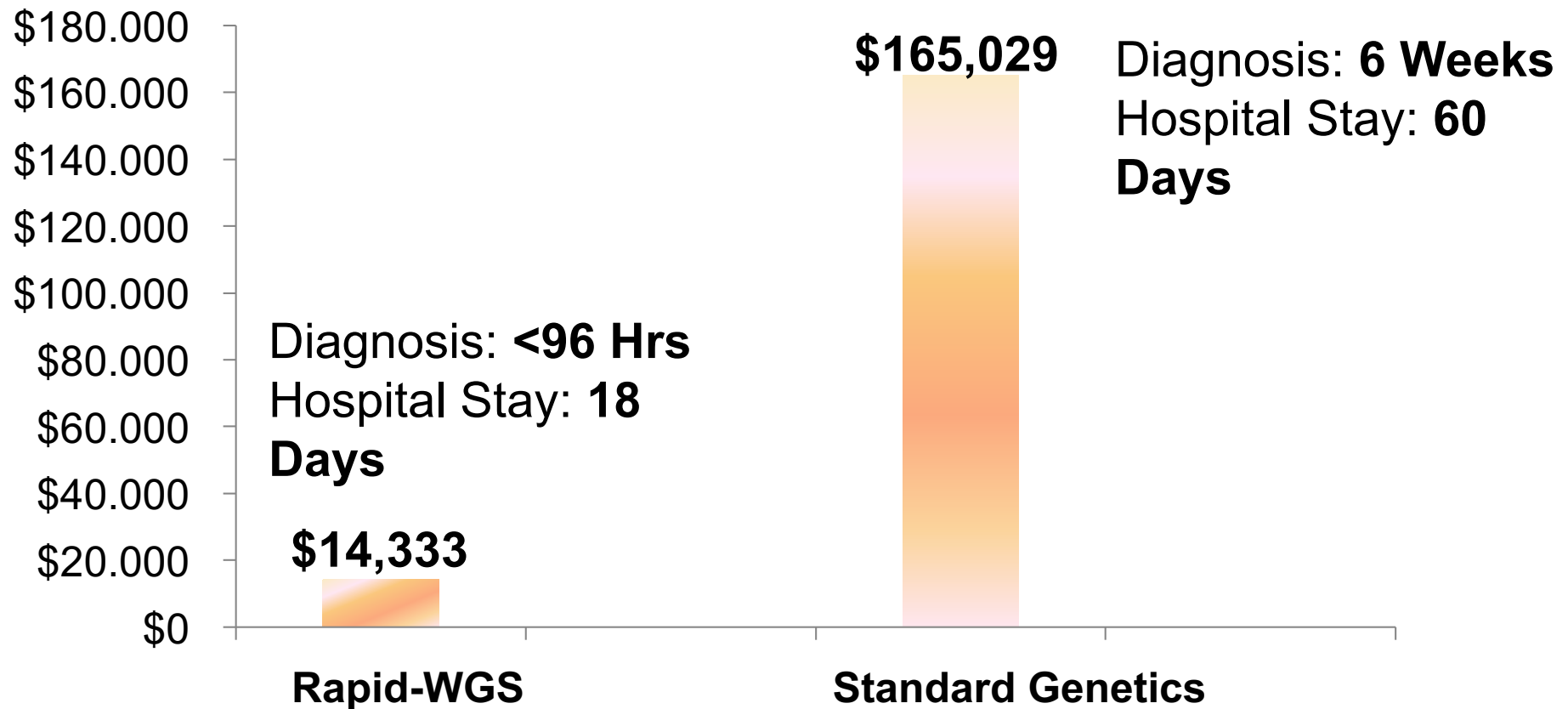


- Context: Rady Children's Hospital – San Diego
- The Strategic Process: Engagement From The Top
- Transforming Healthcare
  - mHealth
  - Telemedicine
  - Sequencing
- Changing The World

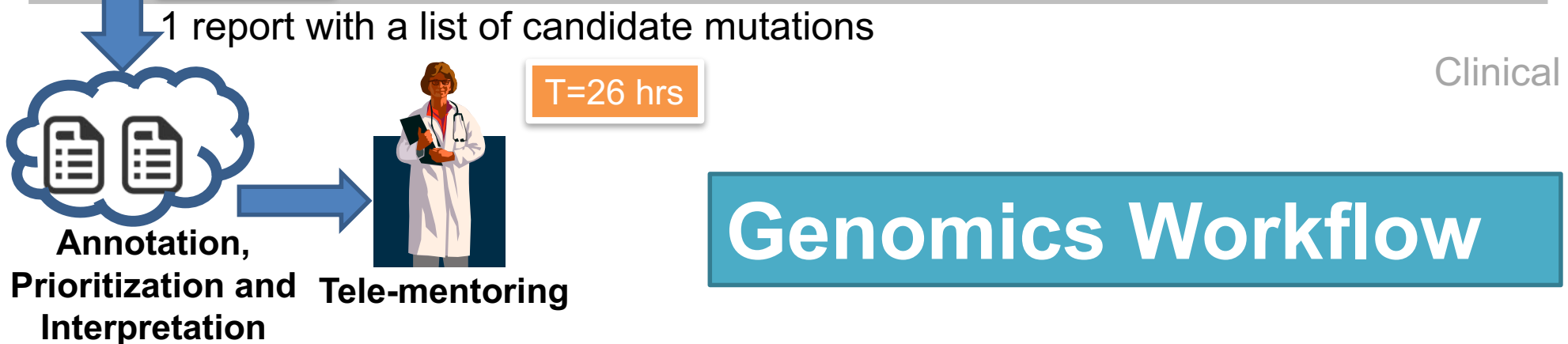
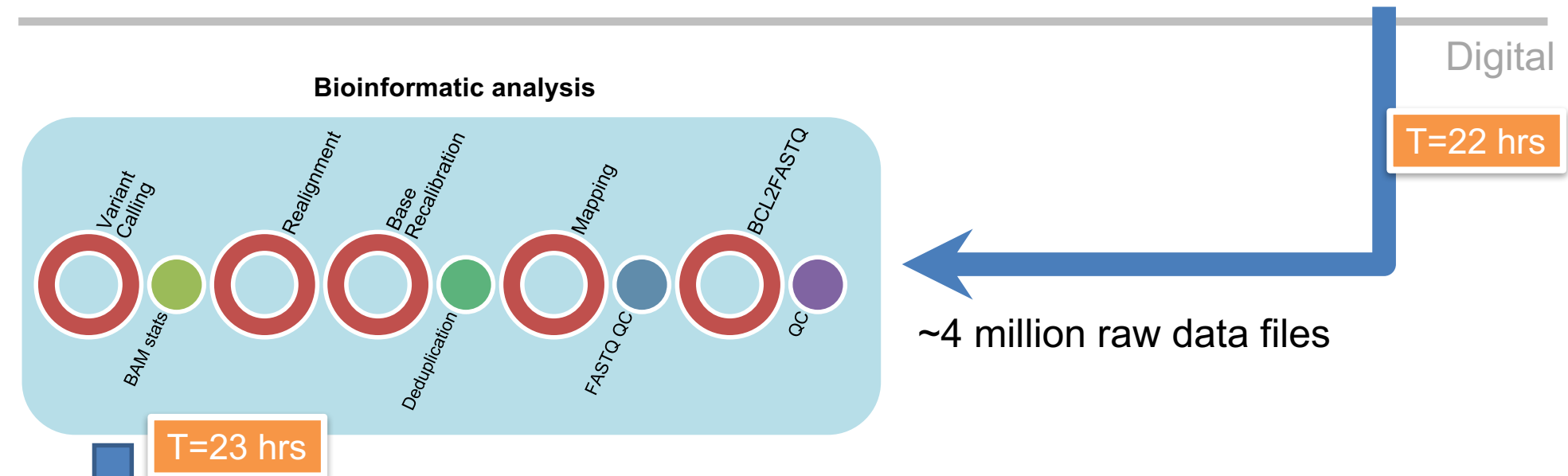
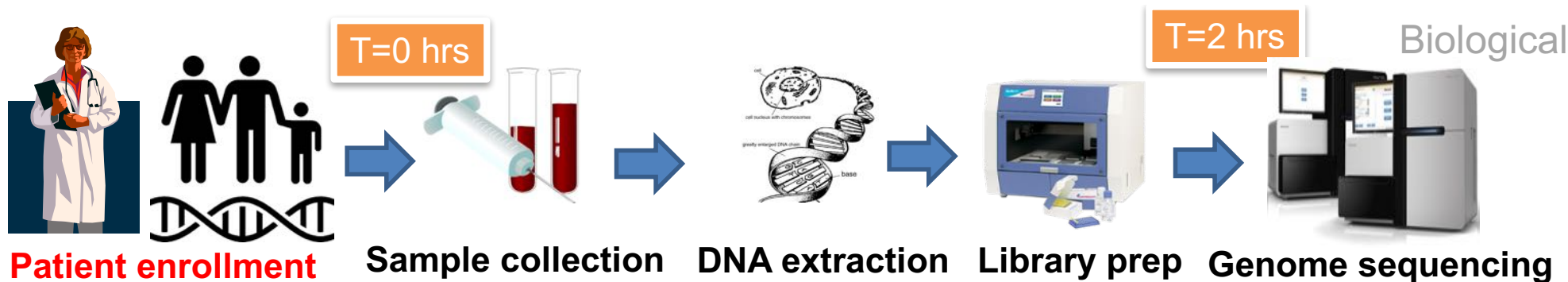




# Actual Cost Incurred Case Comparison



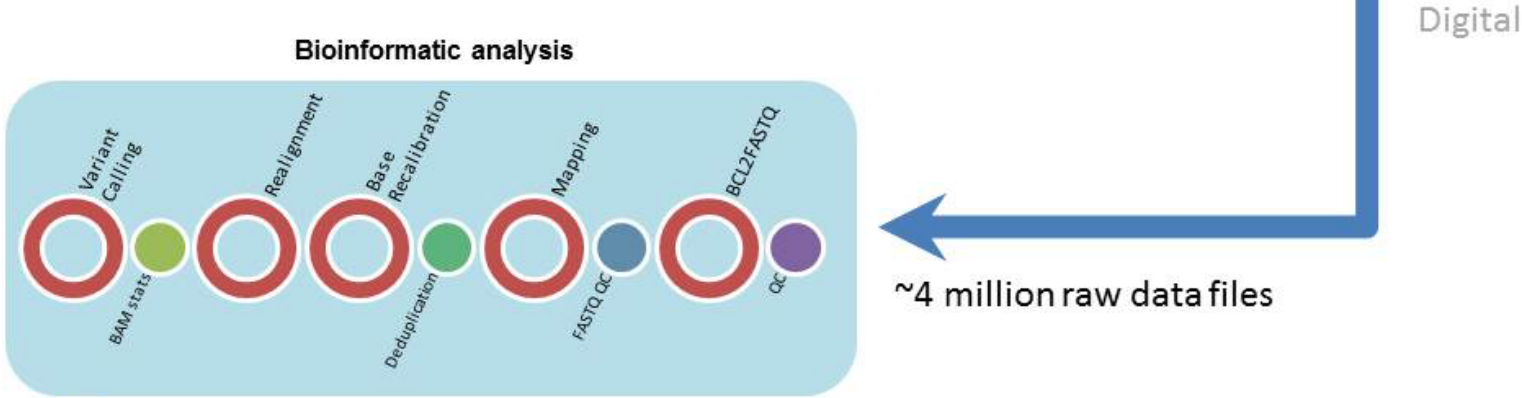
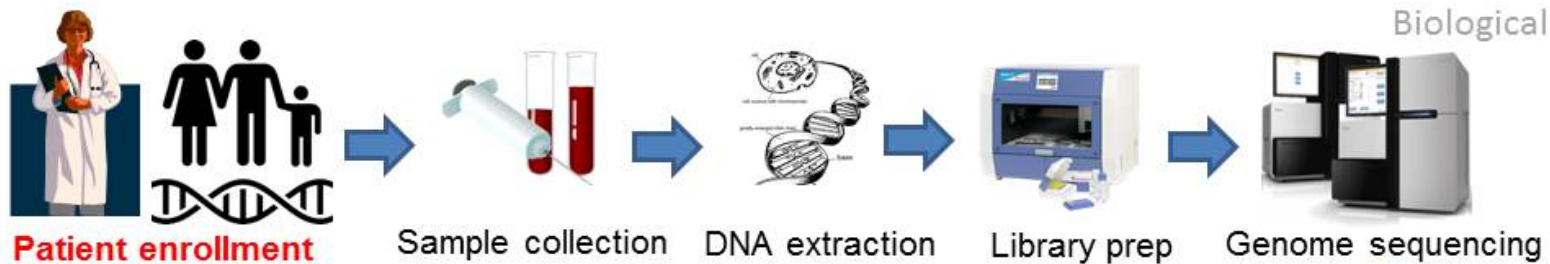




# Genomics Workflow

Phase 2

**EMR**



Rich phenotype data

1 report with a list of candidate mutations

Clinical



**eGenomics Workflow**

**EMR**

- Context: Rady Children's Hospital – San Diego
- The Strategic Process: Engagement From The Top
- Transforming Healthcare
  - mHealth
  - Telemedicine
  - Sequencing

- Transforming Healthcare (a.k.a. Changing The World)



Expectations



Reality









YOU CAN DO  
**ANYTHING,**  
**- BUT YOU CAN'T DO EVERYTHING.-**

DAVID ALLEN





A person's silhouette is shown in the lower center, looking up at a vast, colorful night sky filled with stars and the Milky Way galaxy. The galaxy's core is a bright, glowing pink and purple, transitioning to yellow and orange towards the bottom. The background is a deep blue and black, dotted with countless stars.

# Changing the World

*it starts from within*





Albert Oriol  
[aoriol@rchsd.org](mailto:aoriol@rchsd.org)  
858 966 5924 (D)  
619 846 1948 (M)