

Welcome



DRK gem. Trägergesellschaft Süd-West mbH **(German Red Cross Hospitals South-West)**

Frank Litterst

Diplom-Kaufmann (cf. Master of Business Administration)
Executive Vice President and CFO of the Hospital Group

Mainz, 10th of May 2017



Table of Contents

1. Overview

1.1. geographical overview

1.2. historical overview

2. Facts and Figures

2.1. stationary-related

2.3. ambulatory-related

3. Challenges and Opportunities

4. Outlook

Overview

- Germany -



- the federal state of Rheinland-Pfalz (RP)
- Capital: Mainz
- 4,0 million residents

- sixteen federal states
- largely autonomous and has its own state constitutions

- 82 million residents



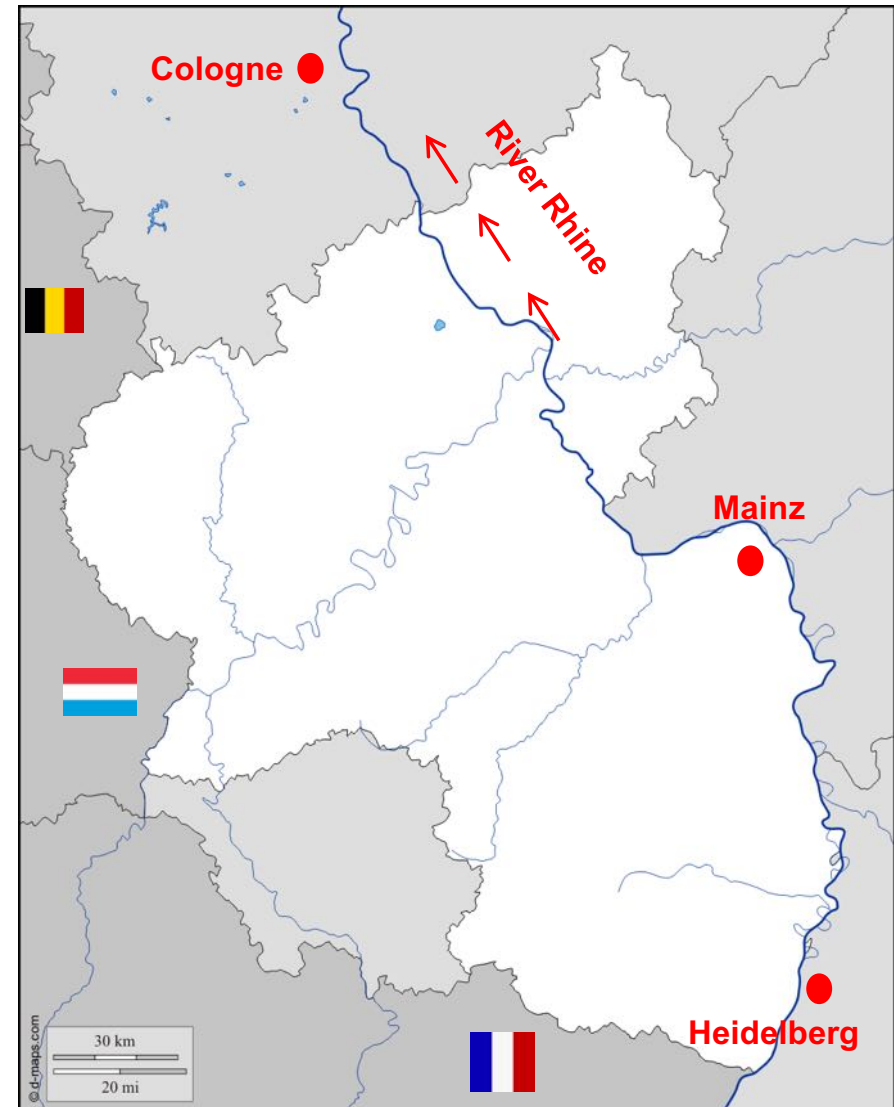
stepi

Overview

- germ. Rheinland-Pfalz / eng. Rhineland-Palatinate -

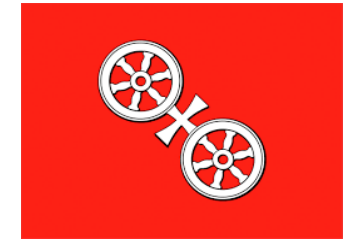


- borders drawn by the allies in 1945/1946
- american garrison in Mainz until 1995
- RP borders to Belgium, Luxembourg and France

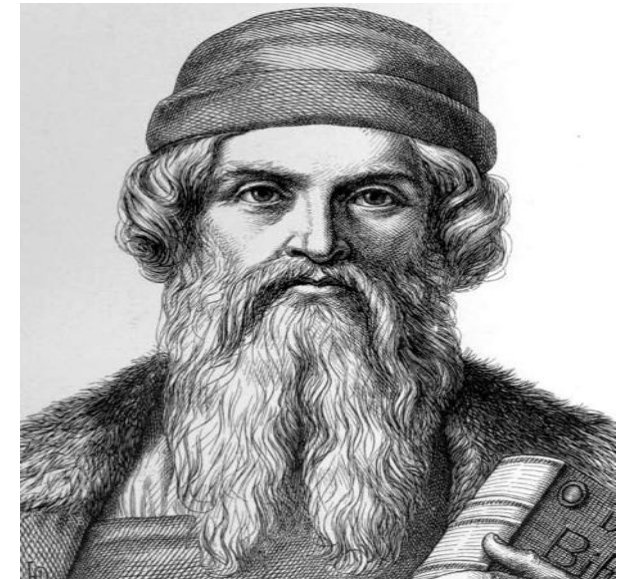


Overview

- Capital Mainz -



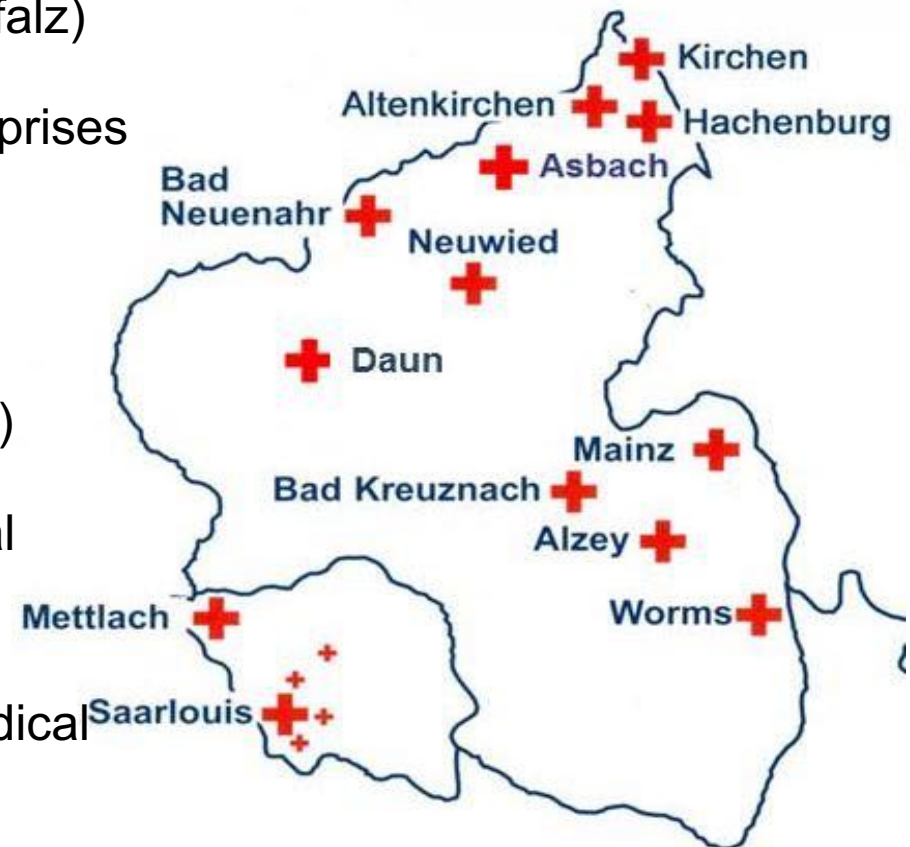
- Mainz (lat. Mogontiacum) founded by the roman empire 38 B.C.
- 2000 years history
- the largest bishopric in west-europe while the middle ages
- Johannes Gutenberg, born 1398, german publisher and printer -> The European Printing Revolution
- occupied after french revolution by french armies from 1792-1793 and 1797-1814
- nowadays 209.779 residents
- 3 hospitals/hospital groups in town



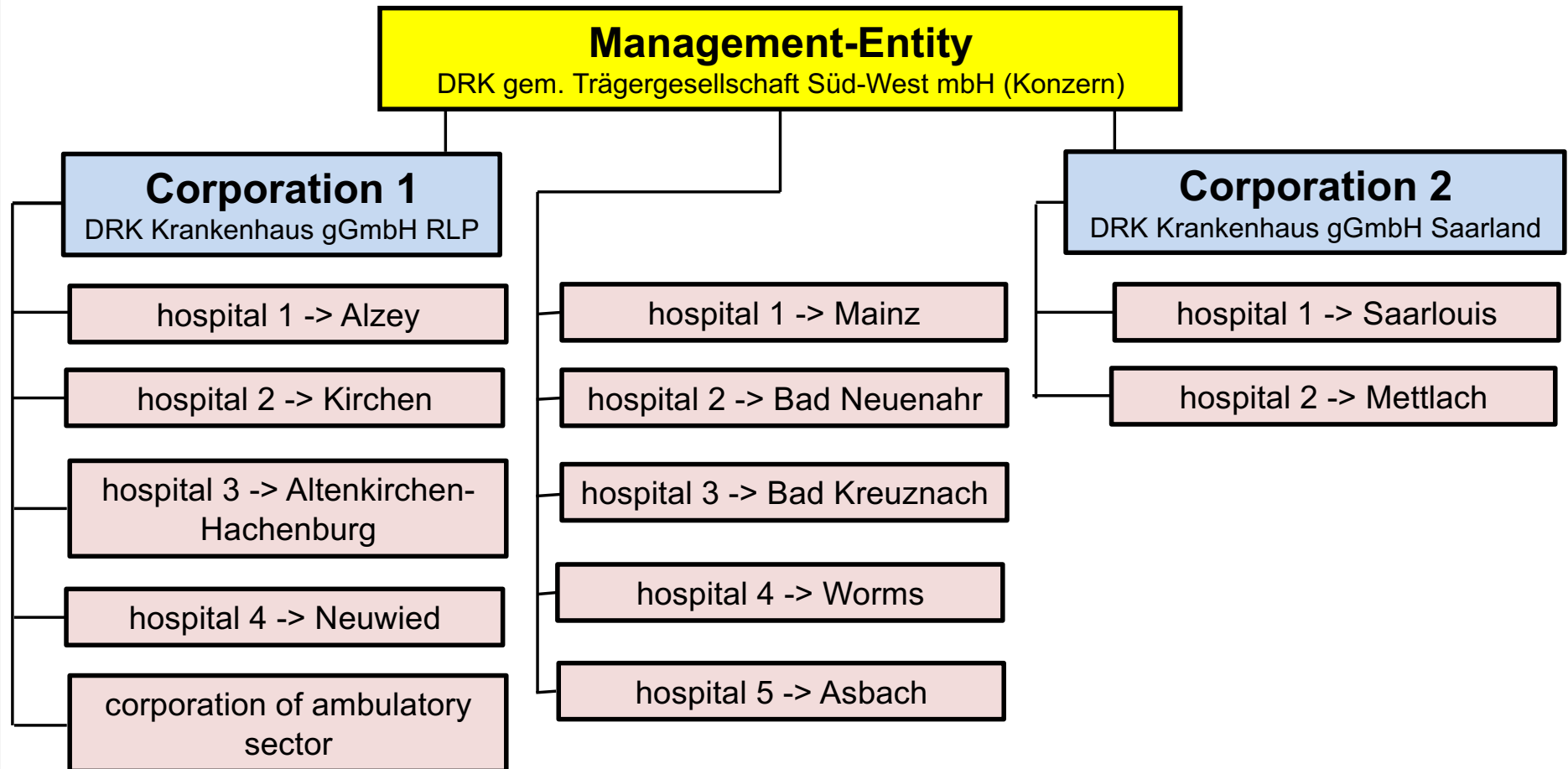
Facts and Figures

- DRK gemeinnützige Trägergesellschaft Süd-West mbH -

- the first management-entity was founded in 1990 (DRK Krankenhaus GmbH Rheinland-Pfalz)
- in the present -> the hospital group comprises 11 hospitals at 13 locations
- 5/11 hospitals provide acute care and further 6/11 facilities provide specialized treatments (e.g. DRK Schmerz-Zentrum)
- the stationary sector includes 16 medical disciplines
- the ambulatory sector comprises 21 medical offices
- 6 supporting subsidiaries



Organisation Chart*1



Note: *1) illustration exklusiv subsidiaries



Medical Disciplines

Our hospital group provides medical services in the disciplines of.....

- surgery
- orthopaedics
- internal-medicin
- geriatrics
- palliative-care
- gynecology
- psychiatry
- intensiv-care-medicin
- neurosurgery
- laboratory-medicine
- neurology
- pediatrics
- sleep-laboratory
- pathology
- urology
- ear-nose-throat-medicin



Facts and Figures

- DRK gemeinnützige Trägergesellschaft Süd-West mbH -

stationary-related

Criterion	2015	2016
Revenue	292 Mio.\$	312 Mio.\$
Return on Revenues	0,62 %	0,97 %
Employees	4.253	4.013
Patients stationary	65.510	61.220

ambulatory-related

Criterion	2015	2016
Revenue	5.1 Mio.\$	6.8 Mio.\$
Return on Revenues	- 25 %	- 16 %
Employees	136	143
Patients ambulatory	66.520	68.622

Facts and Figures

- DRK gemeinnützige Trägergesellschaft Süd-West mbH -

stationary-related

Criterion	2015	2016
Doctors	495	501
Nurses	1.725	1.701
Assistance	2.033	1.994
stationary number of beds	1.745	1.609

ambulatory-related

Criterion	2015	2016
Doctors	41	45
Assistance	95	98

Challenges and Opportunities



Outlook

- recruiting of foreign employees -> especially doctors
- more flexible working time
- improved cooperation (physician and data exchange) between the ambulatory- and stationary sector
- delegation of responsibilities from the doctors to the subordinated bodies
- implementation of telehealth with regard to the statutory requirements
- transformation of the patient record into an electronic patient record
- resources constantly shrinking -> more comprehensive controlling -> improved resources allocation





Thank you !



**Deutsches
Rotes
Kreuz**

Aus Liebe zum Menschen.

